



AQUELLA

BEACH • COUNTRY CLUB • GOLF



## AQUELLA

Asia's leading integrated golf, tennis and beach resort and country club

Experience a new level of nature, wellbeing and connection at Aquella, the award-winning beach, golf resort and country club located on the pristine Andaman Sea coastline.

Nestled among lush pine forests, crystal clear lakes and a 2.5 km stretch of white, sparkling sand, Aquella is the leading integrated golf, tennis and beach resort and country club in Asia, embraced by the natural beauty of Phang Nga.



ACTUAL SITE PHOTO



UNCOVER  
BREATH-taking  
MOMENTS IN  
PHANG NGA





## LOCATION

Aquilla is a short ride from international airports and Thailand's best beaches and diving spots.

Experiencing world-famous nature is no longer a dream while living in one of Asia's best located communities near the Similan Islands, Koh Phi Phi and the Hongs of Phang Nga.

Highly accessible for both travel and adventure, Aquella is a mere half-hour car ride from Phuket International Airport and is a short boat trip away from Phang Nga's rich abundance of world-renowned beaches, islands, caves and diving spots. With the planned Phang Nga - Andaman International Airport, travel time will be reduced to approximately 20 minutes.









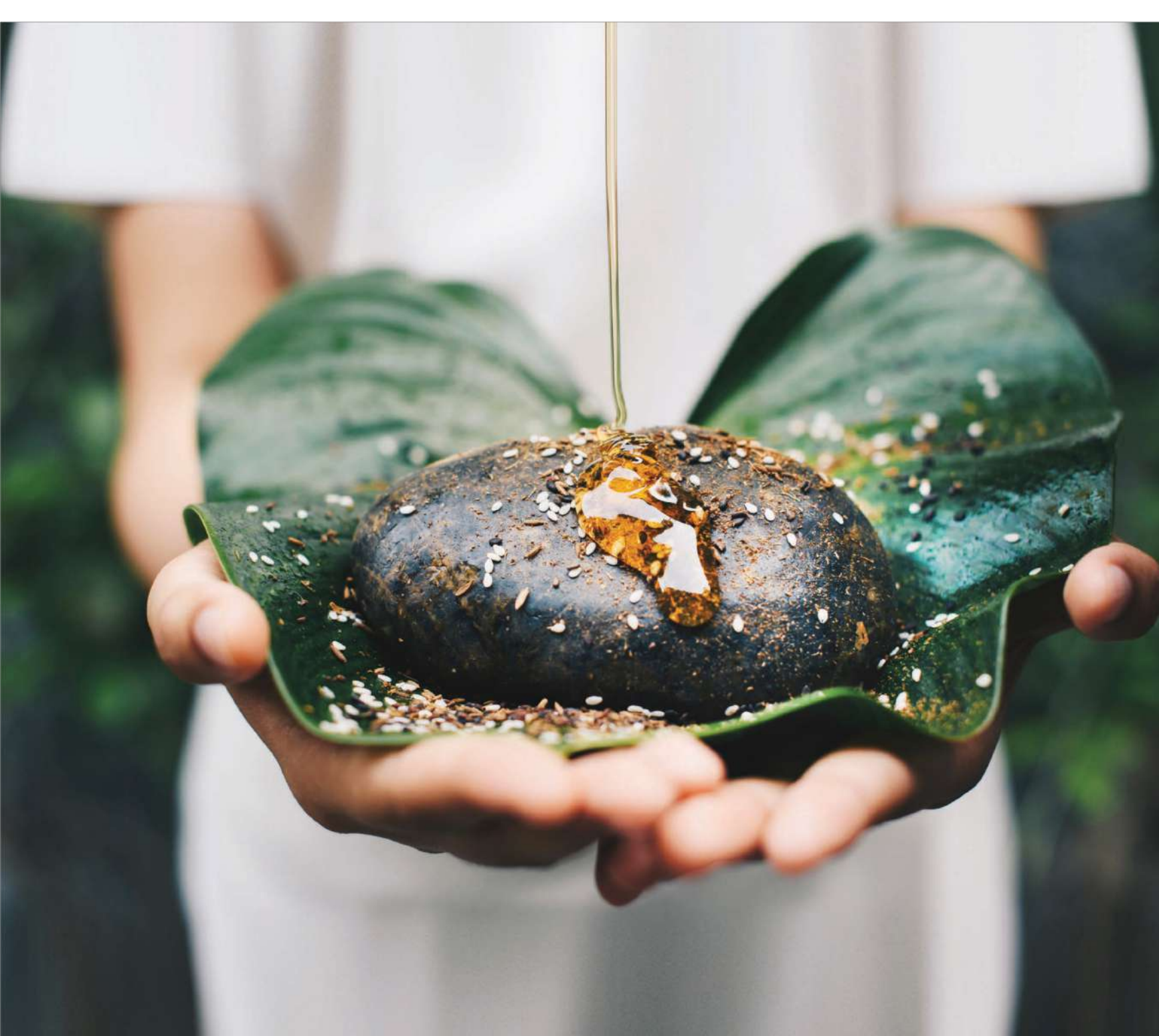
## NATURE

Inspired by our 2.5 km of uninterrupted shoreline connecting the sea, lakes and canals, Aquella celebrates the cleansing powers of water.

Rejuvenate yourself in our gardens and water-filled surroundings, complimented by our green development features. Explore wildlife and experience a sense of oneness with nature through our jogging trails and gardens, with easy access to the Similan Islands and adjacent National Parks.







## WELLNESS

Dive into the ocean, play a calming game of golf, plan the weekend's island adventures.

Get active at the tennis centre, practice yoga after a session at the gym, then jog or cycle home on network of tracks and trails throughout our lushly landscaped site.

Unwind in the contemporary embrace of our world-class spa and wellness sanctuary, or simply meditate by the lake.

Whatever "wellness" means to you, it can be found at Aquella.

## CONNECTION

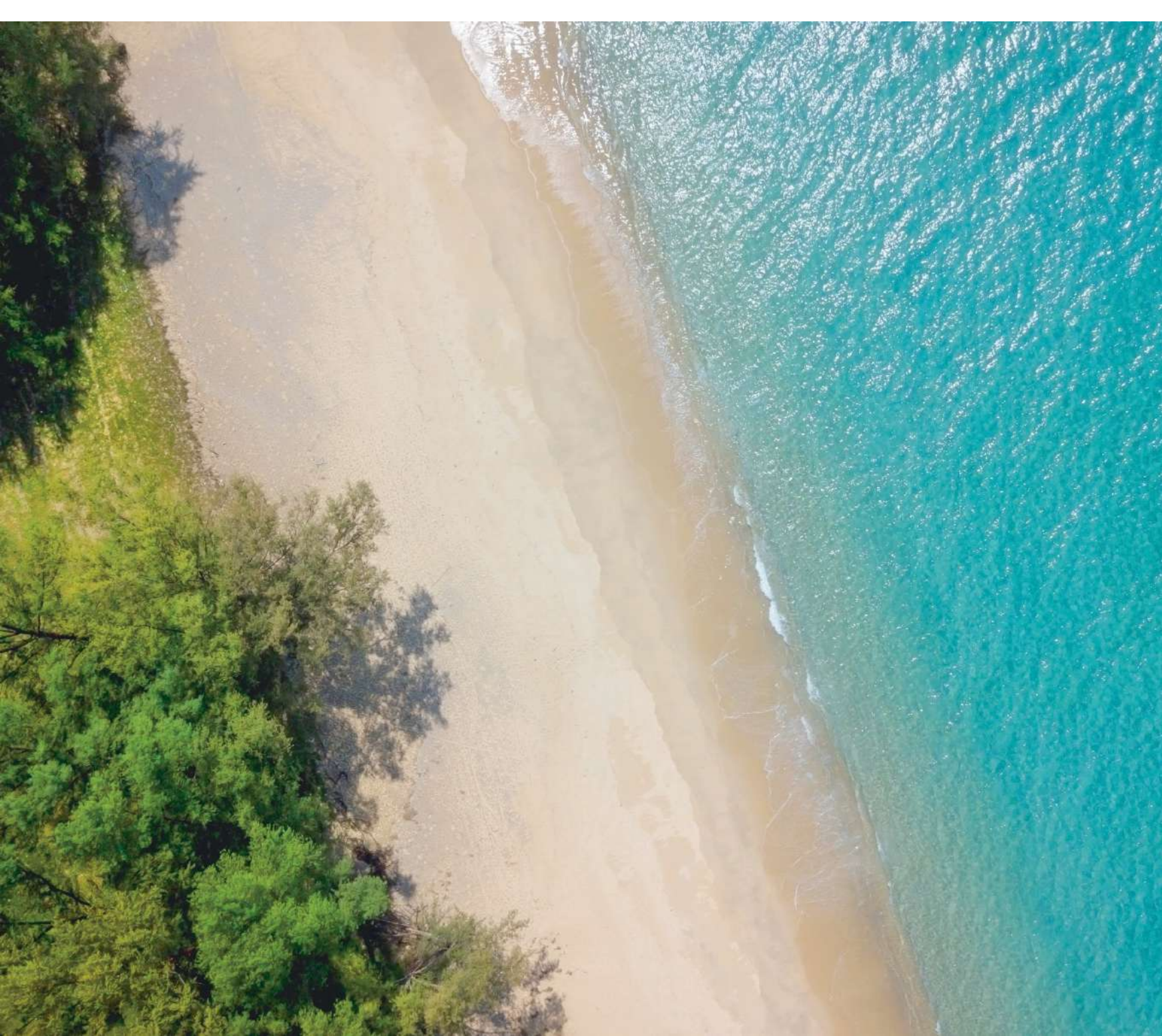
Indulge in the opportunity to reconnect with yourself and your loved ones.

Make the most of our luxury, family-friendly amenities including the beach and country clubs, kids club and play areas, and a planned boutique commercial village full of interesting retail, food and lifestyle options.

Bond through exciting shared experiences at community events. At the same time, remain connected with the world outside while enjoying our beautifully designed residences and public areas, all of which are tech-friendly.







## WHO WE ARE

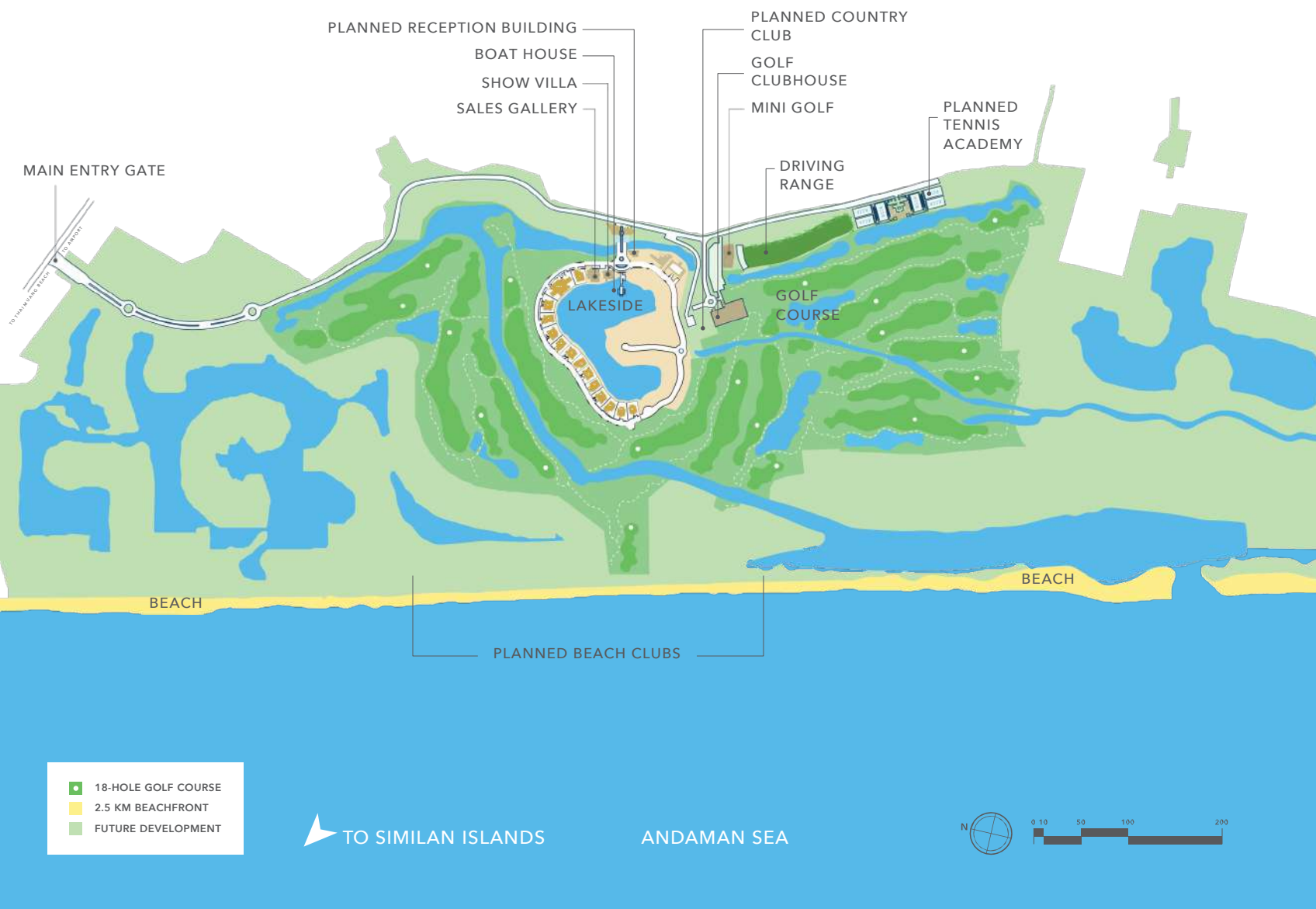
A partnership of Asia's  
leading hotel and  
residence developers.

Aquella is brought to you by Pinetree Residence Co., Ltd, a joint venture between renowned international developers Pacific Century Premium Developments Limited, the Paradise Group (an affiliated entity of the Lan Kwai Fong Group) and their Thai partners. The teams from Pacific Century Premium Developments and the Lan Kwai Fong Group have delivered such celebrated developments as Andara and Andara Signature in Phuket, Bel-Air in Hong Kong, and the Park Hyatt Niseko in Japan. Recognised for projects built with luxury and quality, the partners share in-depth global development experience marked by their prudent, design-led, sustainability-driven and community-friendly approaches.





AQUELLA  
LAKESIDE



## A BEAUTIFULLY DESIGNED, MASTER PLANNED COMMUNITY

Aquella is Asia's leading integrated golf, tennis and beach resort and country club

The impressive Lanna-style entrance gate opens onto a grand central boulevard, linking the residences with the golf and country clubhouse and adjacent amenities including a driving range, mini-golf and tennis clubs, as well as the wellness area.

A wide range of additional recreational and community facilities are in planning for future development.

Aquella Lakeside represents the first phase of Aquella, with stunning lake and golf course views in the heart of the project.



## RESIDENCES

Enjoy indoor and outdoor living in your natural, refined luxury residence.

The design of our residences is an exquisite testimony to the expertise of the award-winning Paradise Designs. Our stunning, lofty residences enjoy uninterrupted views of the lake and beautifully landscaped gardens and pools, entwined with our native gardens.



ACTUAL SITE PHOTOS





## INTERIORS

Elegant, subtle lines with attention to detail express a sense of modern beauty combined with the wonder of Thai aesthetics.

Inside the residences, where comfort and luxury rule, warm glows of natural light brighten the interiors. The bespoke wood-rich fittings create a basic tonal palette, which is delicately matched with luxurious, yet eco-friendly finishings to create rich yet subtle aesthetics.





## BEACH

A place to simply unwind,  
exhale and breathe.

Opening directly onto 2.5 km of  
pristine white sands of the Andaman  
Sea, Aquella's beachfront offers the  
perfect mix of first-rate amenities and  
cool beach vibes. By day, enjoy the  
choice of blissful beachside lounging  
and action-packed activities and  
escapes. At sunset, stretch out on a  
yoga mat, or unwind with a cocktail  
or a cool glass of wine.







## GOLF COURSE

Spectacular rolling green terrain brimming with the beauty of water. Set to become one of the best courses in Asia.

With the majestic panorama of the Andaman Sea as its backdrop, Aquella's par-72, 18-hole, 7,000-yard course is surrounded by lush pine forests and a profusion of exotic, tropical plants. The signature 11th hole tees off directly towards the Andaman Sea.

Pacific Coast Designs are the talented team behind the Aquella Golf Course layout. Widely recognized among the best golf designers in Asia, their vast experience and portfolio includes the highly regarded courses at Black Mountain, Hua Hin and the Hong Kong Golf Club.

ACTUAL SITE PHOTO

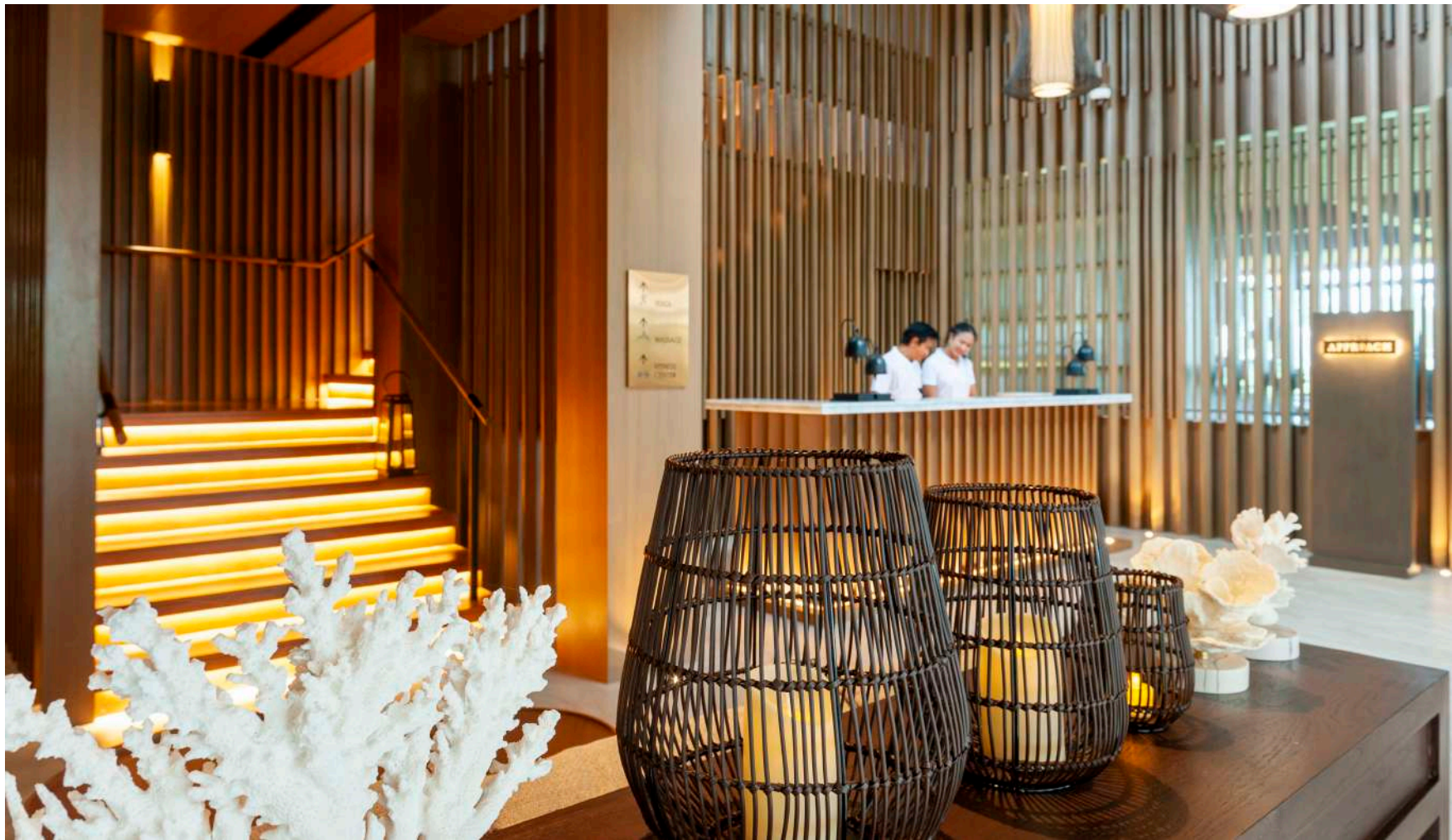


## GOLF CLUB- HOUSE & COUNTRY CLUB

Unparalleled amenities where luxury, service and comfort rule.

With idyllic views of the beautiful golf terrain, Aquella's golf and country club offers an exclusive, prestigious setting for private social gatherings in a friendly, informal atmosphere. Before a round of golf, players can warm up on the driving range, prepare in the spacious changing rooms, and catch up with fellow golfers over a drink on the terrace.

Committed to the finest level of service excellence, our clubhouse offers a truly extensive range of family-friendly amenities, including mini golf, a gymnasium and yoga studio, massage rooms, tennis and petanque courts. From pool-side brunches, karaoke, a game of pool, playdates at the kid's club to a quick run on the treadmill or evening cocktails, life is a breeze in this coveted members-only club.

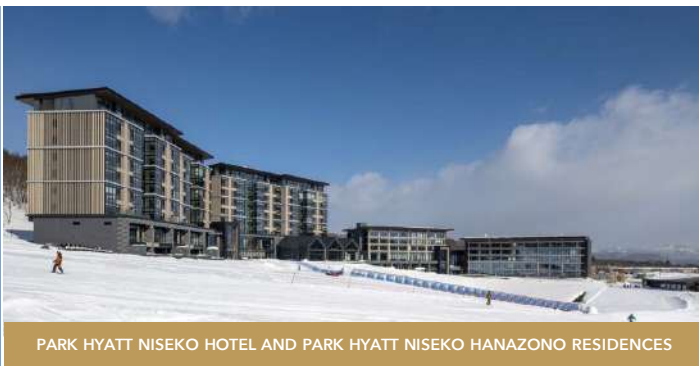


ACTUAL SITE PHOTO





PACIFIC CENTURY PLACE TOKYO



PARK HYATT NISEKO HOTEL AND PARK HYATT NISEKO HANAZONO RESIDENCES



PACIFIC CENTURY PLACE JAKARTA



CALIFORNIA TOWER HONG KONG



SHANGHAI DREAM CENTRE



ANDARA PHUKET

## PACIFIC CENTURY PREMIUM DEVELOPMENTS

As a part of PCCW Group, Pacific Century Premium Developments Limited\* is highly reputable in the development and management of luxury property and infrastructure projects in the region. Widely recognised as a trendsetter in innovative lifestyle concepts and exceptional new standards in residential, office and resort

developments, the Company's landmark projects include Cyberport and Bel-Air in Hong Kong, Pacific Century Place in Jakarta, Indonesia and Tokyo, Japan as well as the Park Hyatt Niseko Development in Hokkaido, Japan.

## LAN KWAI FONG GROUP

Lan Kwai Fong Group, founded by entrepreneur and businessman Dr. Allan Zeman (GBM, GBS, JP), is involved in a variety of sectors across Asia. Property development, operations and management in commercial, leisure, and entertainment ventures lie at the core of the business.

Andara Resorts & Villas and Andara

Signature in Phuket, Thailand, California Tower in Hong Kong as well as Lan Kwai Fong Chengdu and the Shanghai Dream Centre in China are amongst the most celebrated property developments by the Lan Kwai Fong Group.

\*Pacific Century Premium Developments Limited is a company incorporated in Bermuda with limited liability.



## ABOUT THE DESIGNER

Formally established in 2003, Paradise Designs is an award-winning multi-disciplinary design practice based in Phuket that provides architectural, interior design, planning and project management services to a diverse client base around the world. Meticulous and distinctive attention to detail as well as a deep

sensitivity towards innovation, culture and the environment have paved the way for their success. Andara Resort Villas and Spa, Andara Signature and Plaza Surin are some of the recognised projects amongst their strong portfolio.

## MANAGEMENT SERVICES

The developers of Aquella plan to form a dedicated property management company, powered by the Andara Phuket team, to run the day-to-day management and rental operations of Aquella.

This will capitalise on the ten-plus years of experience gained from successfully managing the Andara and Andara Signature properties in Phuket on behalf of owners.

In addition to property management, optional services planned to be available

to individual owners include housekeeping, pool cleaning and maintenance, catering and chef services, food and drink and flower shopping services, private drivers, landscaping and gardening, routine maintenance, pest control and general repair services. These services will be offered by the Aquella Lakeside Property Management team, the same team that will manage the Aquella Lakeside Rental Management Program.







# AQUELLA

BEACH • COUNTRY CLUB • GOLF



Pacific Century  
Premium Developments



PINETREE RESIDENCE CO., LTD

Copyright ©2021 Pinetree Residence Co., Ltd. All rights reserved. Any descriptions and photos herein are for illustration purposes only and may be subject to a further change or revision without notice. You are advised not to rely on such description and photos. Should you have any inquiries or question, please consult your own sales personnel or relevant professionals. No representation or warranty, express or implied, is made herein and no reliance should be placed on the accuracy, fairness or completeness of any messages or information presented herein. This material does not constitute an offer or invitation to subscribe for or purchase any assets, and nothing contained herein shall form the basis of any contract or commitment whatsoever. If there is any discrepancy or conflict between the English version of this document and a version in a language other than English, the English version shall prevail.

The photos contained herein are not taken from the development (unless noted) and may have been enhanced by computer programs. Some of the pictures and graphics are merely artist's impression which have been created or enhanced by computer graphics and do not necessarily represent or resemble the development or the premises within the development. All information shall be subject to the Agreement for Sale and Purchase for the development. The Developer and the Seller reserve the right to cancel or make any changes or modifications to the project development and its layout plan; the building / villa design, specifications, features, floor plans, layout, materials; the timing for the development of the project; the availability or intended use of all facilities or services within the development; or any aspect of the development without prior notice. The facilities and services intended to be available within the development (such as the golf club, golf course, the spa, the country club, tennis and fitness facilities, trails and restaurants) may not be available immediately upon the date of occupation. All information given in this sales brochure is subject to the final plans as approved by the government and the relevant authorities; and the legal documents that are applicable to this development. Certain planned facilities and services may be subject to governmental consents or licences. Terms and conditions apply to all the services/facilities mentioned in this sales brochure.

[AQUELLA.COM](http://AQUELLA.COM)

[SALES@AQUELLA.COM](mailto:SALES@AQUELLA.COM)

+852 5804 9780

+66 (0) 2150 0575